

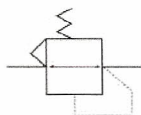
Regulator AR series



AR2000-02

AR5000-10

Symbol:



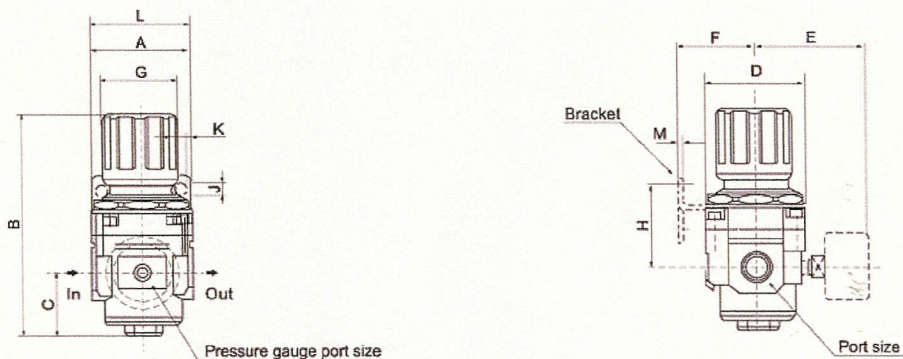
How to order

AR	2000	-	02
Regulator	Body size		Port size
	1000		M5/M5
	2000		02:1/4"
	3000		03:3/8"
	4000		04:1/2"
	5000		06:3/4"
			10:1"

Specification

Model	AR1000-M5	AR2000-02	AR3000-02	AR3000-03	AR4000-03	AR4000-04	AR4000-06	AR5000-06	AR5000-10
Port size RC(PT)	M5X0.8	1/4"	1/4"	3/8"	3/8"	1/2"	3/4"	3/4"	1"
Flow rate (L/Min)	100	550	2500	2500	6000	6000	6000	8000	8000
Fluid	Air								
Proof pressure	1.5Mpa(15.3kgf/cm ²)								
Max. operating pressure	1.0Mpa(10.2kgf/cm ²)								
Ambient & fluid temperature	5-60°C								
Adjustable pressure range	0.05~0.7Mpa		0.05~0.85Mpa						
Bracket	B120	B220	B320	B320	B420	B420	B420	B640	B640
Pressure gauge	Y30-10-M5	Y40-4-1/8	Y40-6-1/8	Y40-10-1/8	Y50-6-1/4	Y50-10-1/4			
Weight (kg)	0.08	0.27	0.41	0.41	0.85	0.84	0.94	1.19	1.19
Body material	Aluminum alloy								

Dimension



Model	Port size	A	B	C	D	E	F	G	H	J	K	L	M	P
AR1000	M5x0.8	30	61.5	11	25	26	25	28	30	4.5	6.5	40	2	20.5
AR2000	1/4"	40	95	17	40	56.8	30	34	45	5.4	15.4	55	2.3	33.5
AR2500	1/4"	53	102.5	25	48	60.8	30	34	44	5.4	15.4	55	2.3	33.5
AR3000	1/4", 3/8"	53	127.5	35	53	60.8	41	40	46	6.5	8	53	2.3	42.5
AR4000	3/8", 1/2"	70	149.5	37.5	70	65.5	50	54	54	8.5	10.5	70	2.3	52.5
AR4000-06	3/4"	75	154.5	40.5	70	69.5	50	66	56	8.5	10.5	70	2.3	52.5
AR5000	3/4", 1"	95	168	48	90	75.5	70	65.8	65.8	11	13	90	3.2	52.5